

RECEIVED 13/05/2024



APPENDIX 2-2

COMMUNT REPORT



Seskin Wind Farm Community Report

RECEIVED: 13/05/2024



Introduction

EDF Renewables is committed to working closely with the communities around our project sites, and to being a good neighbour. This document sets out how EDF Renewables is demonstrating this commitment to continuous community engagement with respect to the Seskin Wind Farm project in Co. Carlow.

It further demonstrates EDF Renewables' commitment to a programme of genuine positive engagement with the local community and stakeholders, and the value placed on their contribution to and involvement in the development of the project. It specifically outlines the actions undertaken as part of a wider community engagement and communications plan that has been ongoing since the project was first announced in March 2022.

RECEIVED: 13/05/2024



RECEIVED: 13/05/2024



03

Contents

Introduction.	2
Approach to consultation	4
Community engagement team.	5
The consultation process	6-9
Impact of community consultation on proposed development	10
Community Benefit Fund	11
Conclusion	12
Appendix A-K	13-37
Contact	38

Approach to consultation

RECEIVED: 13/05/2024

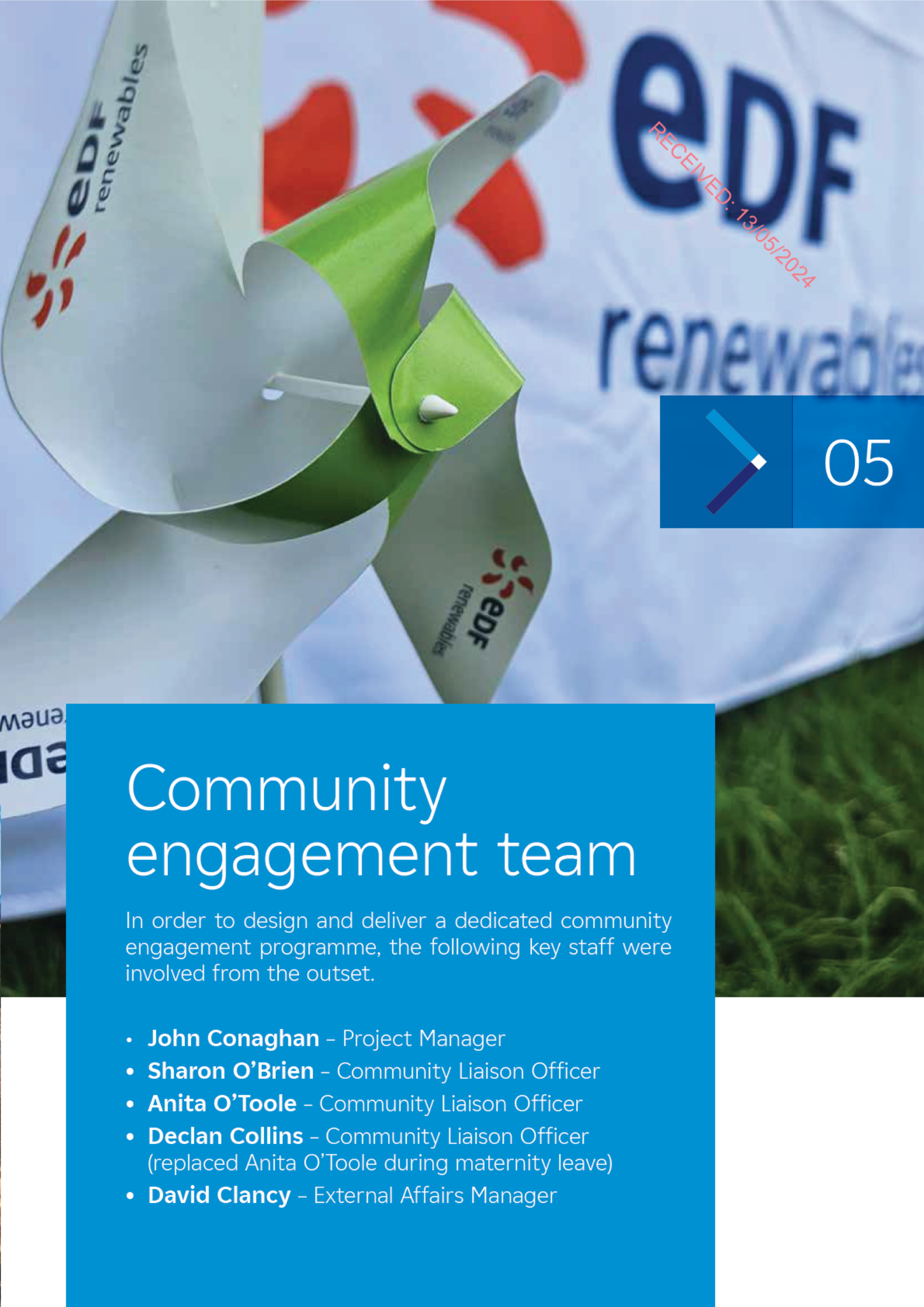
EDF Renewables recognises the importance of ensuring that communities in the vicinity of our projects are kept fully informed on their progress and receive timely updates on key project milestones. It is also critically important that communities are given every opportunity to review and provide feedback on the proposed project.

As well as adhering to industry best practices in relation to community consultation as set out in the draft Wind Energy Guidelines 2019, our approach to engagement throughout has focused on:

- Being open and transparent in all our communications
- Communicating project updates and milestones as early as possible
- Providing opportunities for feedback on the proposed project
- Listening and answering any questions
- Identifying and understanding local issues to be considered in the development of the project

04





RECEIVED: 13/05/2024



05

Community engagement team

In order to design and deliver a dedicated community engagement programme, the following key staff were involved from the outset.

- **John Conaghan** – Project Manager
- **Sharon O'Brien** – Community Liaison Officer
- **Anita O'Toole** – Community Liaison Officer
- **Declan Collins** – Community Liaison Officer (replaced Anita O'Toole during maternity leave)
- **David Clancy** – External Affairs Manager

The consultation process

Phase 1

Introducing the project

Once the initial scope of the project was clear, we announced our intention to develop Seskin Wind Farm in March 2022. Our aim was to make as many members of the local community aware of the proposed project as possible.

During the week commencing 7 March 2022, an information leaflet (**Appendix A**) was distributed to all homes within 2km of the project site, to introduce the project, provide details of its scope, and encourage positive two-way dialogue from an early stage. Our team also went door-to-door to all homes within 1.8km of the site, to speak with local residents while providing the information and answer any questions they may have.

Local residents were advised of the intention to develop a wind energy project in the area and were provided with initial design details of the project. They were also advised of the intention to carry out further public consultation and details of where to find out further information. All residents were provided with contact details of the community engagement team who could be contacted with any further queries. In total, 144 households received this information.

The information leaflet contained information detailing:

- An overview of EDF Renewables
- The potential contribution of onshore wind energy to the Irish Government's Climate Action Plan targets and its impact on electricity bills
- The proposed scope of the project, its location, number of turbines, height of turbines and related infrastructure
- The establishment of a Community Benefit Fund
- Next steps
- Contact details including the project website, email address and phone numbers of two Community Liaison Officers

The project webpage (Seskin wind farm - EDF Renewables (edf-re.ie)) went live this same week. It has been updated on a regular basis at various points since its launch, as the project has developed and more information has become available during the design and assessment process.

A dedicated email address (seskinwindfarm@edf-re.ie) was also created and included in all information materials. The mailbox is monitored by the project team, and all queries receive a response within 48 hours.

Local elected representatives within the Muinebheag Municipal District were initially contacted by email to provide an overview of the proposed development and to invite initial feedback. The email correspondence (**see Appendix B**) included detailed information on the proposed development, including contact details for further engagement. All Oireachtas members from the Carlow constituency were consulted and information brochures were similarly provided.



Phase 2

Updating on the project's progress

In July 2022, we held a drop-in information clinic at a local venue, where residents could drop by to speak to members of the project team and ask any questions in relation to the project. The event was advertised in the Carlow Nationalist newspaper in advance ([see Appendix C](#)) and again all local and constituency representatives were contacted to encourage their constituents to attend. This event was attended by c.10 people.

In November 2022, following the progression of various site and environmental surveys, we shared an update on the project's progress since the initial project launch. A new information leaflet ([see Appendix D](#)) containing detail of the project's achievements to date and illustrating a preliminary turbine layout was again distributed to all homes within 2km of the site, and our team again went door-to-door to all homes within 1km, to share the information and answer residents' questions.

In addition to these events, the team continued to respond to queries received via the website or project mailbox, and Community Liaison Officers carried out home visits where requested to discuss the project with members of the local community in more detail.

Phase 3

Holding a public exhibition

A public exhibition was held at the Lord Bagenal Inn on 15 August 2023 from 3-8pm. The purpose of this event was to present detailed project information ([Appendix E](#)), to the local community, explain the findings of the various studies carried out as part of the Environmental Impact Assessment, and show the newly revised layout of the proposed wind farm with accompanying photomontages to help the community assess visual impact.

The exhibition also featured an updated project timeline, information on the proposed Community Benefit Fund, and on other aspects of wind energy. In addition, a leaflet discussing biodiversity at the site ([Appendix F](#)) was created and made available to attendees. Members of the project team and from MKO, environmental consultants on the project, were in attendance on the day. There was no requirement to register in advance and all were welcome to attend.



08

Public Exhibition

Attendance at the exhibition was promoted in advance in a number of ways:

- An event invite (**Appendix G**) was distributed to all homes within 2km of the project site, containing information about the project and the date and time of the public exhibition.
- Adverts (**Appendix H and I**) were placed in the Carlow Nationalist on 1 August and 8 August, and a notice was included in the Leighlin Parish Newsletter on 13 August (**Appendix J**)
- A press release was issued to all local media: [EDF Renewables Ireland to host public exhibition for proposed Carlow wind farm - EDF Renewables \(edf-re.ie\)](https://www.edf-re.ie/news/edf-renewables-ireland-to-host-public-exhibition-for-proposed-carlow-wind-farm)

The press release received extensive coverage in local media:

- o KCLR96 FM: [Public exhibition taking place today on a proposed Carlow wind farm \(kclr96fm.com\)](https://www.kclr96fm.com/news/public-exhibition-taking-place-today-on-a-proposed-carlow-wind-farm)
- o Carlow Nationalist: [derefer \(truehawkmedia.ie\)](https://www.truehawkmedia.ie/news/carlow-nationalist-derefer)
- o Carlow Live: [Proposed Carlow wind farm could power the equivalent of 36,000 homes says EDF Renewables Ireland - Carlow Live](https://www.carlowlive.ie/news/proposed-carlow-wind-farm-could-power-the-equivalent-of-36000-homes-says-edf-renewables-ireland-carlow-live)
- EDF Renewables External Affairs Manager David Clancy was interviewed on KCLR 96FM radio to promote the event: [Plans for Seskin Windfarm near Old Leighlin expected to be lodged with Carlow County Council later this year \(kclr96fm.com\)](https://www.kclr96fm.com/news/plans-for-seskin-windfarm-near-old-leighlin-expected-to-be-lodged-with-carlow-county-council-later-this-year)
- All TDs, Senators and Cllrs in the relevant area were invited to attend the event



The public exhibition was attended by c.30 people. A virtual exhibition, containing all of the same information presented at the in-person event, was also created: [EDF Seskin Wind Farm - SeekBeak](#). This went live on the same day as the public exhibition, and remains available to view.

The main issues raised by members of the local community during the course of the community consultation process in relation to the project were:

- The visual impact of the project – residents queried the visual impact the turbines would have on the local landscape. Using the photomontages illustrating how the turbines will look from several local landmarks, the team described how and why the proposed turbine locations were selected.
- Noise – in relation to queries about the level of noise produced by operational wind turbines, the team explained the existing noise limits in Ireland, and how these are among the strictest in Europe.
- Shadow flicker – some residents queried whether the turbines would produce shadow flicker. The team explained that no shadow flicker would be created.
- Ecological sensitivities – residents questioned the impact on local biodiversity and the environmental impact of the project, and were provided with details of the mitigation strategies in place and surveys conducted as part of the EIAR.
- Cumulative impacts – some attendees raised the issue of cumulative impact from multiple wind farms in the local area.

We discovered after the event that, due to an administrative error, a number of residences did not receive the direct invite in advance of the event. We therefore delivered a letter ([Appendix K](#)) to these residences soon after, apologising for this error and offering to call out to residents' homes to present the information from the public exhibition and answer any questions they may have. To date we have received no such requests.

Impact of community consultation on proposed development

While no specific design change requests from the community had been sought, key concerns raised included the distance between turbines and residential properties, and the location of the substation. In response to these concerns, a setback distance of four times tip height has been incorporated into the design, in line with the 2019 Draft Wind Energy Development Guidelines, and the substation has been located away from residential properties.

RECEIVED: 13/05/2024



Community Benefit Fund

RECEIVED: 13/05/2024

Should the project qualify for the Renewable Electricity Supply Scheme (RESS), it is expected that for each megawatt hour (MWh) of electricity produced by the wind farm, the Proposed Development will contribute €2 into a community fund for the first 15 years of operation of the Proposed Development. If this commitment is changed in upcoming Government Policy, the fund would be adjusted accordingly.

The value of this fund would be directly proportional to the electricity generated by the wind farm. Under the current T&Cs of RESS, the fund value would be expected to be in the region of c.€240,000 per year.

The Community Benefit Fund belongs to the local community. The premise of the fund is that it should be used to bring about significant, positive change in the local area. To make this happen, the first task will be to form a benefit fund development working group that clearly represents both the close neighbours to the project as well as nearby communities. This group will then work on designing the governance and structure of a community entity that would administer the Community Benefit Fund.

The types of projects and initiatives that could be supported by such a Community Benefit Fund could include youth, sport and community facilities, schools, educational and training initiatives, and wider heritage, and environmental projects. Initial local suggestions for use of the fund included grants for local schools, the construction of footpaths and footpath improvement works, water-mains connections for residents who relied on river water, local enterprise schemes, riparian planting of native species, energy retrofitting of houses and contributions to electrical bills.

The number and size of grant allocations will be decided by a Community Fund liaison committee with various groups and project benefiting to varying degrees depending on their funding requirement.

Conclusion

RECEIVED: 13/05/2024

EDF Renewables has carried out active engagement, consultation and dialogue with the local community from an early stage in the development of the Seskin Wind Farm project, and remains committed to keeping all stakeholders informed as the project develops further.

Through this ongoing process, we have enhanced our understanding of the key issues and concerns of the local community regarding the project and wind energy more generally.

However it has also allowed us to communicate the many environmental and economic benefits of wind energy, the importance of projects like Seskin Wind Farm to meeting Ireland's renewable energy targets, and the role of the community benefit fund in supporting local initiatives and activities. We are committed to continuing to engage in a positive and proactive manner with the local community around Seskin Wind Farm over the lifetime of the project, and remain at the community's disposal to address any queries into the future through the channels established as part of this process.



Appendix A

[Back](#)

[Appendix A page 1](#)

[Appendix A page 2](#)

RECEIVED: 13/05/2024



Introduction

EDF Renewables Ireland is investigating the potential for a wind farm on land to the northwest of the village of Old Leighlin, Co. Carlow. The proposed Seskin Wind Farm site is located in the townlands of Seskinrea and Ridge.

We are committed to engaging with the local community throughout the development of the project. This information is being circulated to all homes within a 2km radius of the site boundary to introduce the project and encourage open and transparent two-way dialogue from an early stage.

About Us

EDF Renewables Ireland is part of one of the world's largest electricity companies and our investment and innovation in renewable energy projects is reducing costs for consumers and bringing significant benefits to communities.

EDF Renewables Ireland's team has a wealth of experience in bringing complex development projects to fruition, across onshore and offshore wind, solar PV and battery storage technology, and is supported by more than 300 colleagues in the UK.

In 2020 we acquired 50% of Codling Wind Park, a major offshore wind farm which will be located off the coast of Co. Wicklow, with a dedicated team who have begun developing the project, and 100% of Wexford Solar, which includes eight solar projects across Ireland. In total we have an Irish onshore development pipeline of almost 1GW.

In the UK, EDF Renewables has an operating portfolio of 36 wind farms and two battery storage units (together totalling almost 1GW).

EDF Renewables operates in more than 20 countries around the world.

Delivering low-carbon energy for Ireland

Under the Climate Action Plan 2021, the Irish Government has set a target to increase the share of renewables providing our electricity from 30% in 2018 to 80% by 2030. Onshore wind is now the cheapest form of new, large-scale electricity generation in Ireland. Our aim is for the completed Seskin Wind Farm to generate up to c.50MW of clean energy, powering more than 36,000 homes across Ireland.¹

Appendix A

[Back](#)

[Appendix A page 1](#)

[Appendix A page 2](#)

RECEIVED: 13/05/2024

Developing the Project

We believe the site has the potential to accommodate up to 7 wind turbines with a maximum tip height of up to 180m. The site study area is shown in red on the map below. EDF Renewables is currently in discussions with Coillte about the inclusion of sections of Coillte property in the proposal in addition to other third party lands. If you have any Coillte related queries about the proposal, please contact lsinfo@coillte.ie

We are currently in the process of gathering wind data and mapping the environmental constraints on site. We will use this information to create a preliminary wind turbine layout and will consult with you further on this in the coming months. The project will also include access tracks, a substation, a temporary construction compound, a permanent meteorological mast, underground cabling and a grid connection that links the wind farm to the national electricity grid.

Local Benefits

If the project receives planning permission and is constructed, we will establish a Community Benefit Fund as part of our long-term commitment to the local area. These funds will go towards supporting positive local initiatives and activities. A proportion of the Community Benefit Fund will also be allocated to a 'Near Neighbour Fund' that will directly benefit the project's closest neighbours. Seskin Wind Farm will also pay a significant amount in rates to Carlow County Council over the lifetime of the project.

Next Steps

- Over the coming months we will be carrying out more detailed environmental studies across the site, including ecology, noise, landscape and visual assessments, and also measuring wind speeds at the site. The results of these studies, along with feedback gathered through consultation with local communities, will be used to determine the final turbine layout.
- We will also be undertaking a transport and access study to assess the best routes for construction vehicles and for bringing turbine components to the site.
- As the project progresses and we have more detailed information to share, we will be holding public consultation events. These will take place in a venue local to the project, or online, depending on Covid-19 guidelines.
- We hope to submit a planning application and an Environmental Impact Assessment Report (EIAR) for the project to Carlow County Council in late 2022 or early 2023.
- Subject to planning permission, Seskin Wind Farm could be constructed and operational by 2026.

— Seskin site boundary



Maps are reproduced under Ordnance Survey Ireland Licence No. EN0092620
© Ordnance Survey Ireland / Government of Ireland

Contact Us

We have created a dedicated website for the project and this will include all key updates as the project progresses:

www.edf-re.ie/our-sites/seskin

We welcome your feedback on our proposals and encourage you to contact us with any questions, concerns or comments through our dedicated Community Liaison Officers for the project:

Sharon O'Brien (086 3890445) and Anita O'Toole (085 107 6089)

Alternatively, you can email the project team at seskinwindfarm@edf-re.ie.

Appendix B

[Back](#)

RECEIVED: 13/05/2024

From: David Clancy
Sent: 07 March 2022 11:00
To: dionella@carlow.ie
Subject: EDF Renewables Ireland plans Seekin Wind Farm
Attachments: Seekin Wind Farm Community update.pdf

Dear Cllr Kinsella,

I hope you're keeping well. I'm writing to let you know that we will shortly be announcing EDF Renewables' plans to develop a c.50MW wind farm to the north-west of Old Leighlin.

The final wind farm layout and turbine numbers have yet to be confirmed, but the project could have up to 7 turbines. A community benefit fund will be established which will support local projects and initiatives.

Our project team is currently gathering wind data and mapping the environmental constraints on site which will be used to create a preliminary wind turbine layout. Detailed environmental studies will also be carried out at the site, including ecology, noise, landscape and visual assessments. The results of these studies, together with feedback gathered in consultation with local communities, will be used to determine the final wind farm layout and number of turbines.

Please see below for the press release announcing the plans, embargoed until Thursday 10 March. I also attach our community booklet which we will be issuing to all residents within 2km of the project this week, to introduce the project and encourage open dialogue from an early stage.

Please let me know if you have any questions about the project, and we would be happy to arrange a meeting to discuss further if that would be useful.

Best wishes,
David



David Clancy
External Affairs Manager

EDF Renewables Ireland
Unit 5, Strand Road
Parkside House, Parkside Road
Schke 4, 304 VPIB, Ireland
T +353 (0) 172 2212
www.edf.ie

Appendix C

[Back](#)

RECEIVED: 13/05/2024

THE NATIONALIST | 12 July 2022

NEWS 13

Elizabeth honoured with centenarian medal

By Suzanne Pender

A SPECIAL medal honouring Co Carlow citizens who reach the age of 100 years was awarded recently to Rathvilly lady Elizabeth Kavanagh.

Elizabeth from Broughillstown, Rathvilly celebrated her milestone birthday last April, which was followed earlier this month by the presentation of a special Decade of Centenaries

commemorative medal from Carlow County Council. Elizabeth was presented with her medal in early June by then cathaoirleach of Carlow Co Council cllr Fintan Phelan at her

Rathvilly home. Elizabeth has happily lived the vast majority of her long life in Broughillstown, Rathvilly. She enjoys good health and was delighted to receive

the honour from the local authority. She was joined by family and friends for the presentation. Born Elizabeth Kelly on 9 April 1922 in Ballycarny, Co Wexford, Elizabeth married local

man Philip Kavanagh and the couple had eight children. Anyone who wishes to have a relative or friend who reaches the age

of 100 years honoured with a commemorative medal can contact Carlow library on library@carlowcoco.ie or call 059 9129705.



Then-cathaoirleach Fintan Phelan presents Elizabeth Kavanagh with the county council's commemorative medal marking her 100th birthday



Elizabeth pictured with her family at the medal presentation

Free hot desk vouchers

By Elizabeth Lee

CARLOW Enterprise Centre is taking part in the national connected hubs voucher scheme. The scheme issues users with three vouchers to use hot desk spaces free of charge. Each voucher is redeemable for a day's hot-desk working in participating hubs.

People may register now to receive three vouchers by logging

on to <https://connectedhubs.ie/auth/register>.

Carlow Enterprise Centre offers a vibrant workspace with high-speed wi-fi, free car parking and free tea or coffee.

The vouchers may be used with Carlow Enterprise Centres via this link: connectedhubs.ie/hubs/profile/137.

Bookings are on a first-come, first-served basis.



SECTION 75 ROADS ACT 1993
S.I. No. 119/1994 ROADS REGULATIONS 1994

NOTICE OF INTENTION TEMPORARY CLOSING OF M9 CARLOW BYPASS

Carlow County Council wishes to give notice of its intention to close a section of the M9 to facilitate the installation of new road studs and centre line marking on the M9 motorway.

Closure	Diversion	Dates
M9 Southbound J6 Carlow South to J7 Paulstown	Divert from J6 to Paulstown via the R448 and R712. Re-join the M9 southbound carriageway at J7 Paulstown.	15th, 16th, 17th, 18th, 19th, 20th, 22nd & 23rd August 7:30pm-6:00am
M9 Northbound J6 Carlow South to J5 Carlow	Divert from J6 via the R448 to Carlow. At Deep Park roundabout take the 4th exit onto the N80. Follow the N80 and re-join the M9 northbound carriageway at J5.	23rd, 24th & 25th August 7:30pm-6:00am
M9 Northbound J5 Carlow to J4 Castledermot	Divert from J5 via the N80 to Carlow. At Deep Park roundabout take the 4th exit onto the R448. Follow the R448 and re-join the M9 northbound carriageway at J4.	25th, 26th, 27th, 29th & 30th August 7:30pm-6:00am
M9 Southbound J5 Carlow to J6 Carlow South	Divert from J5 via the N80 to Carlow. At Deep Park roundabout take the 1st exit onto the R448. Follow the R448 and re-join the M9 southbound carriageway at J6.	30th & 31st August 1st September 7:30pm-6:00am

Submissions regarding this temporary road closure may be made in writing and/or via e-mail (seniorengineer@carlowcoco.ie) to the Senior Engineer, Transportation Department, Carlow County Council, Athy Road, Carlow to be received no later than 17:00 hrs on Friday 22nd July 2022.

PADRAIG O'GORMAN,
Director of Services

Carlow County Council Offices, Athy Road, Carlow
www.carlow.ie

Appendix D

[Back](#)

[Appendix D page 1](#)

[Appendix D page 2](#)

RECEIVED: 13/05/2024



Seskin Wind Farm

Community Update, November 2022



c.50 MW

A generating capacity
of up to c.50MW,
powering more than
36,000 homes¹



**up to 7
Turbines**

with tip heights
of up to 180m



Introduction

Following the launch of the Seskin Wind Farm project in March 2022, EDF Renewables Ireland would like to take this opportunity to update local residents on how the project is progressing.

The proposed wind farm site is located to the northwest of the village of Old Leighlin, in the townlands of Seskinrea and Ridge.

We are committed to engaging with the local community throughout the development of the project. This information is being circulated to all homes within a 2km radius of the site boundary to give an update on the project and encourage open and transparent two-way dialogue.

Community Benefit Fund

If the project receives planning permission and is constructed, we will establish a Community Benefit Fund as part of our long-term commitment to the local area. The Community Benefit Fund will see funds from the project go towards supporting positive local initiatives and activities.

About Us

EDF Renewables Ireland is part of one of the world's largest electricity companies and our investment and innovation in renewable energy projects is reducing costs for consumers and bringing significant benefits to communities.

EDF Renewables Ireland's team has a wealth of experience in bringing complex development projects to fruition, across onshore and offshore wind, solar PV and battery storage technology, and is supported by over 400 colleagues in the UK.

Delivering low-carbon energy for Ireland

Under the Climate Action Plan 2021, the Irish Government has set a target to increase the share of renewables providing our electricity from 30% in 2018 to 80% by 2030. This will require a significant increase in the amount of solar, offshore and onshore wind on our electricity grid. Onshore wind is now one of the cheapest forms of new, large-scale electricity generation in Ireland. Our aim is for the completed Seskin Wind Farm to generate up to c.50MW of clean energy, powering more than 36,000 homes¹ across Ireland.

¹ SEAI Energy in Ireland Report, December 2020, Section 7.3.1, Table 33

Appendix D

[Back](#)

[Appendix D page 1](#)

[Appendix D page 2](#)

RECEIVED: 13/05/2024

Project achievements to date

- ✓ Completed two years of **bird surveys** in the area and **bat surveys** have been conducted during Spring, Summer & Autumn of 2022
- ✓ Commenced key **environmental & ecology surveys**, including hydrology, habitat & archaeology studies
- ✓ Completed six months of **wind speed measurement** and mapped environmental constraints
- ✓ Designed **preliminary wind turbine layout** (right)

Based on our site investigations to date, we believe the project can accommodate up to seven wind turbines, with a tip height of up to 180m. EDF Renewables is currently in discussions with Coillte about the inclusion of sections of Coillte property in the proposal in addition to other third party lands. If you have any Coillte related queries about the proposal, please contact lsinfo@coillte.ie

We intend for any future planning application to be based on this layout, however this may be subject to change as we gather more information through detailed environmental studies which will take place in the coming months, and through consultation with local residents and other interested stakeholders.

The layout has been designed with a minimum setback distance of 720m to the nearest house from each turbine, in accordance with the Draft Wind Energy

Development Guidelines (2019) which propose a setback distance of four times tip height.

The project will also include access tracks, a substation, battery storage containers, a temporary construction compound, a permanent meteorological mast, underground cabling and a grid connection which links the wind farm to the national electricity grid.



Maps are reproduced under Ordnance Survey Ireland Licence No. EN0092620
© Ordnance Survey Ireland / Government of Ireland

Next Steps and Timelines

Detailed environmental studies are continuing across the site including ecology, hydrology and landscape and visual assessments. These studies will be compiled into an EIA which will accompany the planning application.

We will also be finalising a grid connection route to Kilkenny substation, as well as a delivery route for turbine components and access points into the site.

We will be holding a public consultation event at a local venue in Q1 2023 (subject to Covid-19 guidance) where we will be presenting detailed project information and photomontages showing what the wind farm could look like from different local viewpoints.

The results of these studies, along with feedback gathered through consultation with local communities and stakeholders, will be used to determine a final turbine and infrastructure layout.

We will be consulting with Carlow County Council and An Bord Pleanála in pre-planning meetings.

We are aiming to submit a planning application for the project in Q2 2023

Contact Us

Please visit our project website which we will keep updated as the project progresses:

www.edf-re.ie/our-sites/seskin

We welcome your feedback on our proposals and encourage you to contact us with any questions, concerns or comments through our dedicated Community Liaison Officers for the project: Sharon O'Brien (086 3890445) and Anita O'Toole (085 107 6089)

Alternatively, you can email the project team at seskinwindfarm@edf-re.ie.

Appendix E

Back

Appendix E [page 1](#)
Appendix E [page 2](#)
Appendix E [page 3](#)
Appendix E [page 4](#)
Appendix E [page 5](#)
Appendix E [page 6](#)
Appendix E [page 7](#)
Appendix E [page 8](#)

RECEIVED: 13/05/2024



SESKIN WIND FARM PUBLIC EXHIBITION

Welcome and Project Overview

Thank you for visiting our exhibition today. We are delighted that you have taken the time to join us for this latest round of public consultation for the proposed Seskin Wind Farm.

The project was launched in March 2022, and we would like to take this opportunity to update local residents on how the project is progressing, and get your feedback on the project and our plans.

The proposed wind farm site is located to the northwest of the village of Old Leighlin, in the townlands of Seskinrea and Ridge. Based on our site investigations, we believe the project can accommodate up to seven wind turbines, with a tip height of up to 180m. The proposed Seskin Wind Farm will generate enough low-carbon electricity to power the equivalent of more than 36,000 homes across Ireland.

The project will also include access tracks, an onsite 38kV substation and battery storage compound, borrow pit, a temporary construction compound, a permanent meteorological mast, underground 38kV cabling and a grid connection which links the wind farm to the national electricity grid.

EDF Renewables is currently in discussions with Coillte about the inclusion of sections of Coillte property in the proposal in addition to other third party lands. If you have any Coillte-related queries about the proposal, please contact lsinfo@coillte.ie

Key Stats:

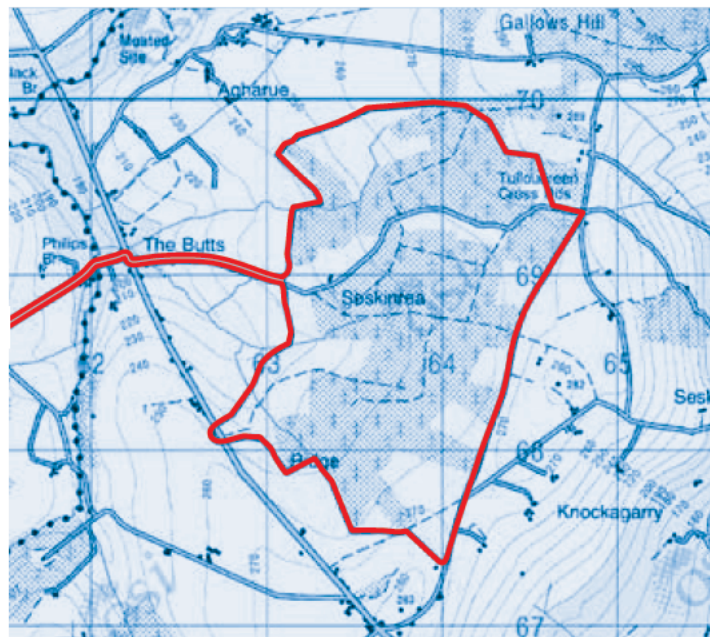
Up to **7 turbines**, up to 180m in height

Generating capacity of **c.50MW**

Will power **c.36,000 homes** across Ireland¹

Maps have been reproduced under Licence No. CYAL5025457
© Ordnance Survey Ireland / Government of Ireland

1. <https://www.ses.ie/publications/Energy-in-Ireland-2022.pdf>
— Site study area



Appendix E

[Back](#)

[Appendix E page 1](#)
[Appendix E **page 2**](#)
[Appendix E page 3](#)
[Appendix E page 4](#)
[Appendix E page 5](#)
[Appendix E page 6](#)
[Appendix E page 7](#)
[Appendix E page 8](#)

REVISED: 13/05/2024

About EDF Renewables Ireland

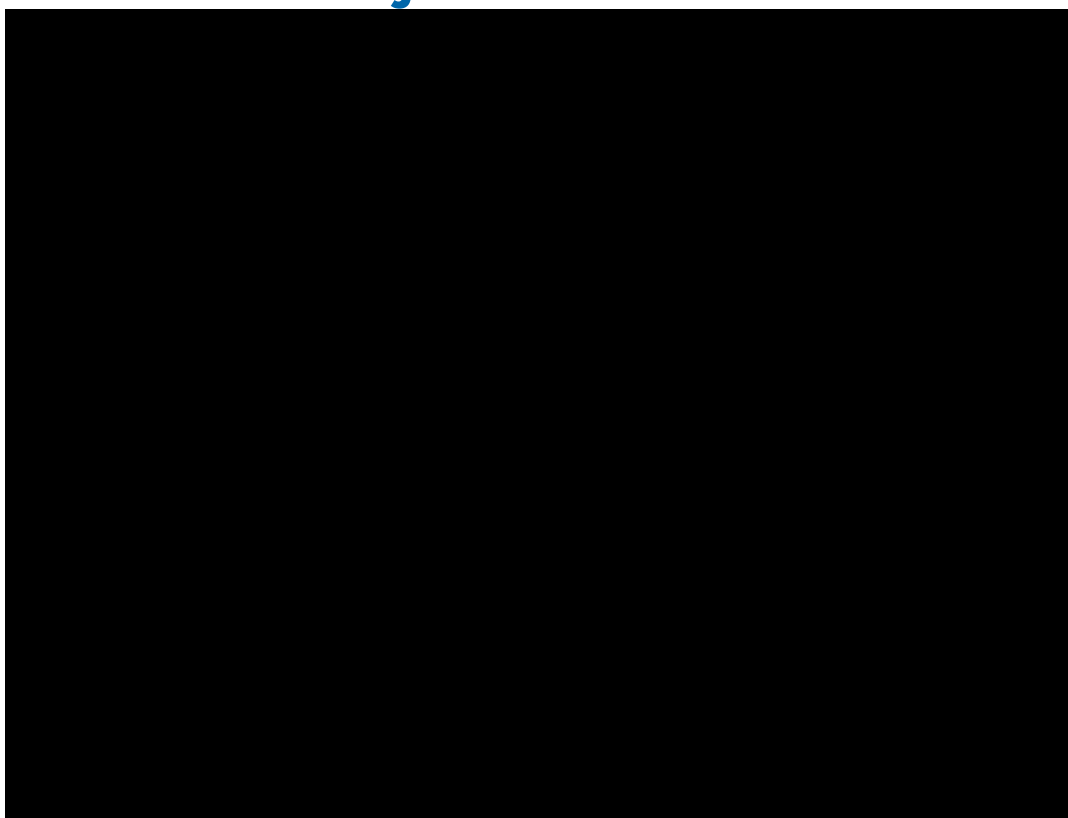
EDF Renewables Ireland is part of one of the world's largest electricity companies and our investment and innovation in renewable energy projects is reducing costs for consumers and bringing significant benefits to communities.

EDF Renewables Ireland's team has a wealth of experience in bringing complex development projects to fruition, across onshore and offshore wind, solar PV and battery storage technology, and is supported by over 400 colleagues in the UK.

About MKO

MKO is a Galway-based Planning and Environmental consultancy with significant expertise and experience as lead planning and environmental consultant, over the last 20 years, on projects in the renewable energy industry and public infrastructure projects. MKO has led the environmental assessments throughout all project stages and is preparing the planning permission applications and Environmental Impact Assessment Report (EIAR) for the Proposed Development on behalf of EDF Renewables Ireland Ltd.

Meet the **Project Team**



Appendix E

Back

Appendix E [page 1](#)

Appendix E [page 2](#)

Appendix E [page 3](#)

Appendix E [page 4](#)

Appendix E [page 5](#)

Appendix E [page 6](#)

Appendix E [page 7](#)

Appendix E [page 8](#)

RECEIVED: 13/05/2024

Benefits of Wind Energy

- **Wind helps lower electricity prices** – wind energy is now one of the cheapest forms of electricity, is quick to build and keeps money in Ireland, supporting local jobs and communities.
- **Wind cuts CO2 emissions** – wind energy saves millions of tonnes of CO2 emissions each year,² and this will increase steadily as new onshore and offshore wind farms provide electricity to the grid.
- **Wind powers Ireland** – Wind energy is consistently generating approximately a third of our electricity.³ Generating 50% or more of Ireland's electricity will be a regular occurrence as more onshore wind farms connect to the grid and we begin to build offshore wind farms. The Irish Government is aiming to generate 80% of Ireland's electricity from renewable energy by 2030.
- **Wind is good for the environment** – While CO2 is emitted in the manufacture and installation of a turbine, the CO2 savings delivered by the turbine pay this back in between six months to two years.⁴ A wind farm is only given permission to build if the planning authority is satisfied with environmental impact reports.

2. Climate change and wind energy (windenergyireland.com)
3. Your wind energy questions answered (windenergyireland.com)
4. Your wind energy questions answered (windenergyireland.com)



Appendix E

[Back](#)

[Appendix E page 1](#)

[Appendix E page 2](#)

[Appendix E page 3](#)

[Appendix E **page 4**](#)

[Appendix E page 5](#)

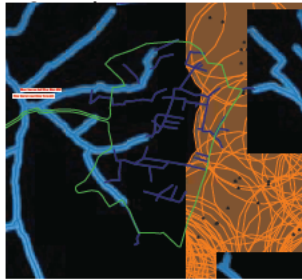
[Appendix E page 6](#)

[Appendix E page 7](#)

[Appendix E page 8](#)

RECEIVED: 13/05/2024

Design Development and Environmental Impact Assessment Report (EIAR)



Constraints map



Dwellings map with set-back buffers 500m/1000m/2000m



Proposed Development Layout

Site Constraints:

The constraints map for the site has been produced following a desk study of all site constraints. The constraints study encompasses the following constraints and associated buffers specifically in relation to the wind turbines:

- Natura 2000 and Designated sites plus 200 metre buffer
- Dwellings plus typically 720 metre buffer (meeting the requirement for a 4 x tip height separation distance)
- Telecommunication Links plus operator-specific buffer
- Watercourses plus 50-metre buffer
- National Inventory of Architectural Heritage (NIAH) and National Monument plus 50 metre buffer

Development Design

A turbine layout was then developed to take account of all the constraints mentioned above and their associated buffer zones and the separation distance required between the turbines. The overall objective is to design a scheme that has the least impact on people living locally and the environment, while optimising the renewable energy generation of the site.

In addition to the above, the locations of the proposed wind turbines, and all other proposed infrastructure locations have been informed by rigorous site investigations and assessments carried out over a two-year period including:

- Ecological Surveys
- Ornithological Surveys
- Hydrological and Geological Site Investigations
- Archaeological Surveys
- Shadow Flicker Modelling
- Noise Modelling
- Landscape and Visual Assessment

Appendix E

Back

[Appendix E page 1](#)

[Appendix E page 2](#)

[Appendix E page 3](#)

[Appendix E page 4](#)

[Appendix E **page 5**](#)

[Appendix E page 6](#)

[Appendix E page 7](#)

[Appendix E page 8](#)

RECEIVED: 13/05/2024

Environmental Impact Assessment Report (EIAR)

Scoping and Consultation:

Scoping is the process of identifying the significant issues which should be addressed by the Environmental Impact Assessment Report (EIAR).

MKO prepared a Scoping Document, which was circulated to statutory and non-statutory consultees, in December 2022, to provide them with an opportunity to comment and to inform the development design and assessment process.

The purpose of the EIAR is to document the current state of the environment on and in the vicinity of the site and to quantify the likely significant effects of the Proposed Development on the environment. The EIAR presents an examination that identifies, describes and assesses the direct and indirect significant effects of the project on the following:

- a) population and human health
- b) biodiversity, with particular attention to species and habitats protected under Directive 92/43/EEC and Directive 2009/147/EC
- c) land, soil, water, air and climate
- d) material assets, cultural heritage and the landscape
- e) the interaction between the factors referred to in points (a) to (d)

The planning application for the Proposed Development will be accompanied by an EIAR. This will be publicly accessible and will address the following headings:

1. Introduction
2. Background to the Proposed Development
3. Consideration of Reasonable Alternatives
4. Description of the Proposed Development
5. Population & Human Beings
6. Biodiversity
7. Birds
8. Land, Soils and Geology
9. Water
10. Air Quality
11. Climate
12. Noise and Vibration
13. Landscape and Visual
14. Cultural Heritage
15. Material Assets (includes Traffic and Transportation, Telecommunications, and Aviation)
16. Interaction of the Foregoing
17. Major Accidents and Natural Disasters
18. Schedule of Mitigation

MKO are compiling the EIAR with the input of several other specialist consultants:

- Hydro-Environmental Services
- Afry
- Tobar Archaeological Services
- TNEI
- Alan Lipscombe Traffic and Transport Consultants

The overall objective is to design a scheme that has the least impact on people living locally and the environment, while optimising the renewable energy generation of the site. Detailed environmental studies are continuing across the site including ecology, hydrology and landscape and visual assessments. These studies will be compiled into an EIAR to accompany the planning application, and we are aiming to submit these to Carlow County Council in Q4 of 2023.



Appendix E

[Back](#)

[Appendix E page 1](#)

[Appendix E page 2](#)

[Appendix E page 3](#)

[Appendix E page 4](#)

[Appendix E page 5](#)

[Appendix E **page 6**](#)

[Appendix E page 7](#)

[Appendix E page 8](#)

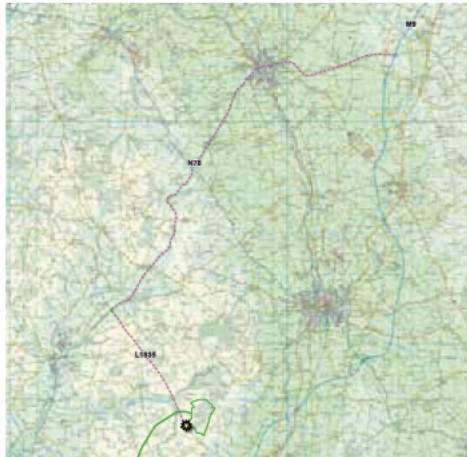
RECEIVED: 13/05/2024

Environmental Impact Assessment Report (EIAR)

Transport and Site Access

It is proposed to access the Seskin Wind Farm via an existing agricultural entrance off the L3037 local road to the east of the site. This entrance will be widened to facilitate the delivery of the construction materials and turbine components. The site entrance has been subject to detailed traffic and transport autotracking assessment.

It is proposed that large wind turbine components will be delivered to the Seskin Wind Farm, from Dublin Port via, the M9, N78 and L1835 'Yellow Road' to the Seskin Wind Farm site entrance.



Grid Connection

It is proposed to connect the proposed Seskin Wind Farm to the national grid, via provision of an onsite 38kV substation and 38kV connection cabling to the existing Kilkenny 110kV substation. The grid connection cabling route will be 20km in length and located within the public road corridor.

Community

EDF Renewables is committed to delivering local benefits and working in partnership with local communities. If the project receives planning permission and is constructed, we will establish a Community Benefit Fund as part of our long-term commitment to the local area. The Community Benefit Fund will see funds from the project go towards supporting positive local initiatives and activities.

The fund will be set up once the project is energised, and we will appoint an administrator to implement the funding strategy and decisions and ensure good governance in the funding administration.

A volunteer committee, drawn from the local community, will be set up to decide on applications made to the Community Benefit Fund by local groups or individuals for funding.



Appendix E

[Back](#)

[Appendix E page 1](#)

[Appendix E page 2](#)

[Appendix E page 3](#)

[Appendix E page 4](#)

[Appendix E page 5](#)

[Appendix E page 6](#)

[Appendix E **page 7**](#)

[Appendix E page 8](#)

RECEIVED: 13/05/2024

Other Considerations

Distance to nearest homes

The layout has been designed with a minimum setback distance of 720m to the nearest house from each turbine, in accordance with the Draft Wind Energy Development Guidelines 2019, which propose a setback distance of four times the tip height of the turbines.

Noise

The blades of wind turbines make a sound as they pass through the air. Every effort is made to reduce this as much as possible. Currently, the guidelines for wind turbine sound levels in Ireland are set between 35 and 45 decibels depending on the time of day and the level of background noise. These are among the strictest limits in Europe today. To put this in context the fridge in your kitchen would typically generate a sound level of around 50 decibels while 40 decibels would be the noise in a quiet office.⁵

Property Devaluation

There is no research that we have seen which shows that wind farms affect property prices in Ireland. A major recent study in Scotland, a country of a similar size and a similar scale wind industry to Ireland, found no evidence of a negative impact on property prices.⁶

Shadow Flicker

Shadow flicker is the name given to the flickering effect caused when the sun is in certain positions in the sky and shines through the rotating turbine blades. Under the Draft Wind Energy Development Guidelines 2019, no shadow flicker is permitted for future wind farms in Ireland. The turbine blades of Seskin Wind Farm will therefore be turned off at the appropriate times to ensure no flicker effect is created.



⁵ Myths about wind energy (windenergyireland.com)
⁶ Myths about wind energy (windenergyireland.com)



Appendix E

Back

Appendix E [page 1](#)

Appendix E [page 2](#)

Appendix E [page 3](#)

Appendix E [page 4](#)

Appendix E [page 5](#)

Appendix E [page 6](#)

Appendix E [page 7](#)

Appendix E [page 8](#)

RECEIVED: 13/05/2024

Project timeline

- Detailed environmental studies are continuing across the site including ecology, hydrology, noise, shadow flicker, and landscape and visual assessments. These studies will be compiled into an EIAR which will accompany the planning application.
- The results of these studies, along with feedback gathered through consultation with local communities and stakeholders, will be used to determine the final turbine and infrastructure layout.
- We will be consulting with Carlow County Council and An Bord Pleanála as part of pre-planning meetings.
- We are aiming to submit a planning application for the project and the EIAR to Carlow County Council in Q4 2023.
- Subject to planning permission, the wind farm is expected to be constructed and operational in 2027.



Contact details

Please visit our project website which we are keeping updated as the project progresses:

www.edf-re.ie/our-sites/seskin

We welcome your feedback on our proposals and encourage you to contact us with any questions, concerns or comments through our dedicated Community Liaison Officers for the project, Sharon O'Brien (086 389 0445) or Declan Collins (087 254 1416).

Alternatively, you can email the project team at seskinwindfarm@edf-re.ie.



Appendix F

[Back](#)

[Appendix F page 1](#)

[Appendix F page 2](#)

[Appendix F page 3](#)

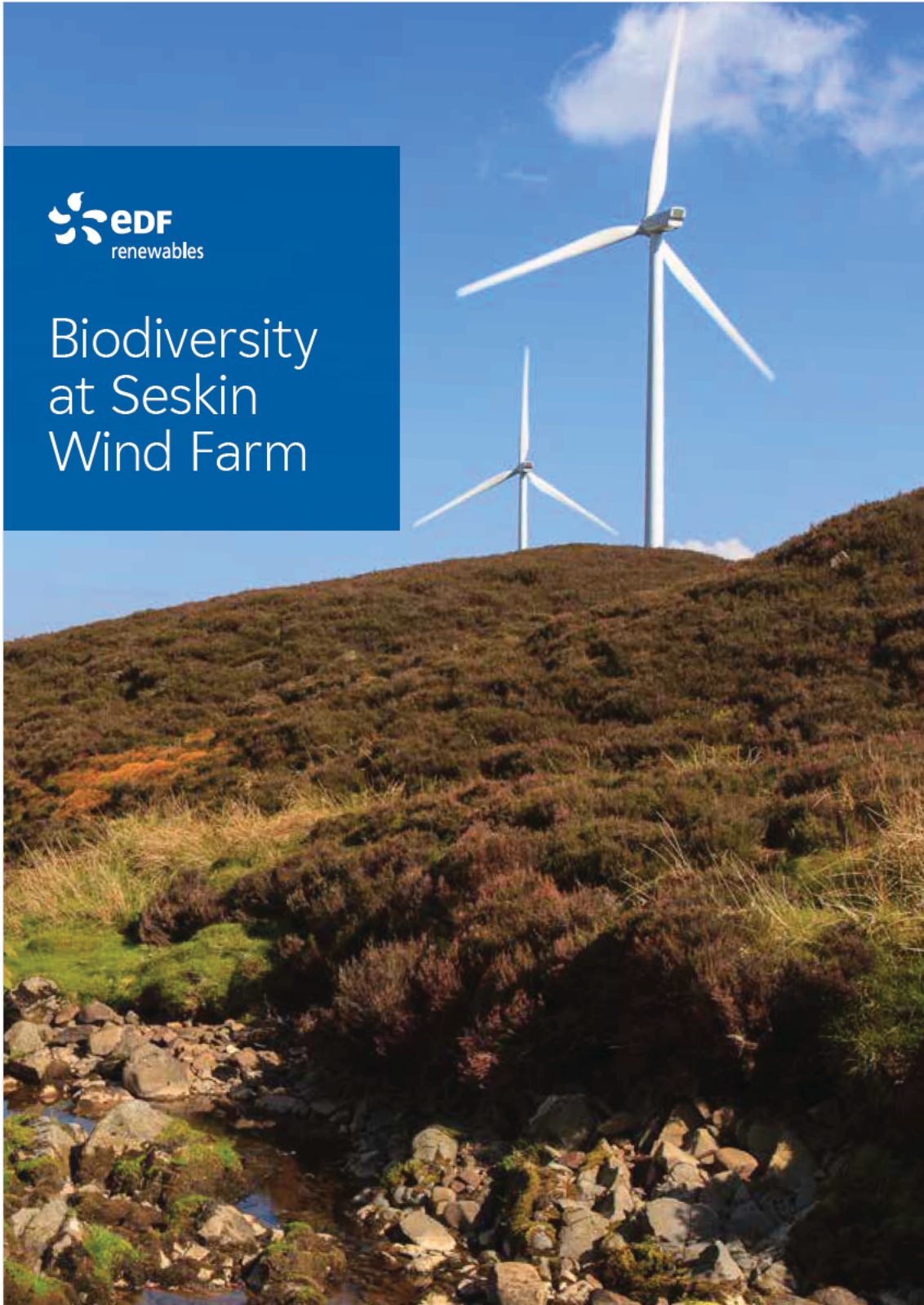
[Appendix F page 4](#)

[Appendix F page 5](#)

[Appendix F page 6](#)



Biodiversity at Seskin Wind Farm



RECEIVED: 13/05/2024

Appendix F

[Back](#)

[Appendix F page 1](#)

[Appendix F page 2](#)

[Appendix F page 3](#)

[Appendix F page 4](#)

[Appendix F page 5](#)

[Appendix F page 6](#)

RECEIVED: 13/05/2024

The proposed Seskin Wind Farm development is located approximately 3.3km northwest of Old Leighlin, Co. Carlow. The landscape of the immediate and surrounding areas of the site consists predominantly of commercial forestry and agricultural grasslands, with surrounding streams feeding into the Rivers Dinin, Nore, and Barrow. This leaflet provides an overview of the main habitats and species recorded during ecological surveys of the area.

As part of the Environmental Impact Assessment Report (EIAR) which must be submitted alongside the planning application, EDF Renewables and MKO must document the current state of the environment on and in the vicinity of the site and quantify the likely significant effects of the proposed development on the environment and the site's biodiversity. The overall objective is to design a scheme that has the least impact on people living locally and the environment, while optimising the renewable energy generation of the site.



02

What is Biodiversity?

Biodiversity is a term given to the variety of life on earth, including all species and ecosystems. A wide variety of specialist ecological surveys are being undertaken at Seskin Wind Farm by MKO, with the project designed to avoid sensitive ecological receptors. The surveys have targeted a wide variety of species and habitats with the aim of determining their distribution in the area. Species recorded in the study area to date include badger, marsh fritillary, as well as a number of bat and bird species. The biodiversity study area for the proposed Seskin Wind Farm development is illustrated in Figure 1.

Biodiversity
Study Area



Figure 1. The biodiversity study area for the proposed Seskin Wind Farm development in which a variety of specialist ecological surveys are being conducted to describe the biodiversity. The inset depicts the main area for the proposed wind farm as well as the proposed cable route for grid connection.

Appendix F

[Back](#)

[Appendix F page 1](#)

[Appendix F page 2](#)

[Appendix F page 3](#)

[Appendix F page 4](#)

[Appendix F page 5](#)

[Appendix F page 6](#)

RECEIVED: 13/05/2024

Habitats

Several of the habitat types found within this study area, and which may be of interest to the local community, are highlighted below.

River Waterbodies

A number of small streams flow in the east and west areas of the Seskin Wind Farm proposed development site. Three small tributaries flow west from the site and merge to join with the River Dinin. East of the site are several small tributaries which flow east, north-east to join the River Barrow. The River Dinin, via the River Nore, eventually joins with the River Barrow approximately 38km south of the proposed development site. These rivers, and other feeder streams, collectively form the River Barrow and River Nore Special Area of Conservation, which is known to support salmon, lamprey species, Nore and freshwater pearl mussel, Otter as well as other plant and animal species. Aquatic invertebrates, such as mayfly, caddisfly, and black fly, along with aquatic vegetation also form part of the river ecosystem and provide an important food and habitat source for the diversity of species that occur within these rivers.

Conifer plantation

Conifer plantation is the most abundant habitat within the biodiversity study area. This habitat is often relatively low in biodiversity value due to the density of trees planted and the monoculture nature of the species composition. Nevertheless, a variety of species can be found utilising its shelter including badger and bird species.

Improved Agricultural Grassland

Several areas of improved agricultural grassland are located within the biodiversity study area. Agricultural grasslands are highly managed areas of vegetation maintained for the production of silage and/or for grazing by animals. Reseeding and fertilization are typical rotational practices in the maintenance of improved agricultural grasslands. In contrast to permanent grassland, improved agricultural grassland tend to be species-poor and the quality of the grassland dependent upon several factors such as soil type, drainage, and management practices. Despite a low variety of plant species, improved grasslands provide habitat for a range of fauna such as birds and invertebrate species.

Wet Grassland

Wet grassland is a type of semi-natural grassland, of which a few small areas occur within the biodiversity study area. Wet grasslands are described as areas dominated by grass species with sedge and rush species co-occurring, and where the soils are wet or waterlogged. Wet grasslands are prone to seasonal flooding and can be areas of poorly drained farmland that has not been recently improved, turlough basins, or alluvial grassland associated with river bodies. In addition to grass, sedge, and rush species, wet grasslands can support a wide variety herbaceous plant species such as creeping buttercup, meadowsweet, and yellow iris, as well as a variety of bird, and insect and other invertebrate species.

03



Appendix F

[Back](#)

[Appendix F page 1](#)

[Appendix F page 2](#)

[Appendix F page 3](#)

[Appendix F page 4](#)

[Appendix F page 5](#)

[Appendix F page 6](#)

RECEIVED: 13/05/2024

Mammals

Mammals including badger and several bat species have been recorded during ecological surveys of the area.

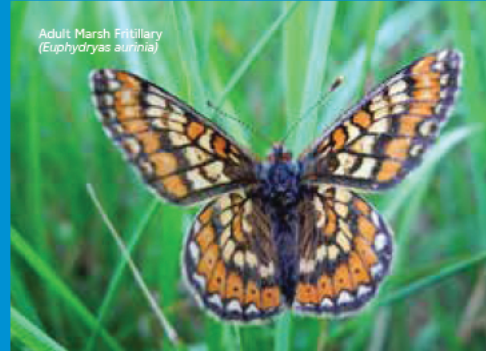
Badger

Badgers (*Meles meles*) live in social groups with family members and make their home by digging extensive tunnels and chambers in the ground, known as setts. Badgers belong to the mustelidae family along with pine martens and otters. The distinct coloration of their dark grey to black bodies, and white heads with broad black stripes from the ears to the snout, passing over their eyes, make recognising a badger unmistakable. The badger is also the largest terrestrial carnivore in Ireland.

Bats

There are nine bat species in Ireland, and a number of these species have been recorded foraging within the study area, including common pipistrelle, soprano pipistrelle, Leisler's bat, myotis species, brown long-eared bat and Nathusius' pipistrelle. Ireland's smallest bat is the soprano pipistrelle and weighs as little as a €1 coin. An individual bat can eat over 3000 midges in a single night. Ireland's largest bat, Leisler's bat, has also been recorded.

Common Pipistrelle
(*Pipistrellus pipistrellus*)



Adult Marsh Fritillary
(*Euphydryas aurinia*)

Invertebrates

Many species of invertebrates can be observed in commercial forestry and grassland habitats. Insects are a group of invertebrates which occur within these types of habitats and include butterflies. The marsh fritillary butterfly (*Euphydryas aurinia*) is a widespread species in Ireland but with a patchy distribution as a result of a special habitat requirement. During the larval (or caterpillar) stage, the marsh fritillary feeds exclusively on a single plant species, known as devil's-bit scabious (*Succisa pratensis*). As a result, devil's-bit scabious is essential for the survival of marsh fritillary. In the adult butterfly stage, this species can feed on a variety of plants, several of which can be found in grasslands. The marsh fritillary is afforded protection in Ireland under the EU Habitats Directive.

Badger
(*Meles meles*)



Appendix F

[Back](#)

[Appendix F page 1](#)

[Appendix F page 2](#)

[Appendix F page 3](#)

[Appendix F page 4](#)

[Appendix F page 5](#)

[Appendix F page 6](#)

RECEIVED: 13/05/2024

Birds

A wide variety of bird species typical of conifer and grassland habitats have been recorded within the general study area. Bird species occurring within and around the biodiversity study area include buzzard, curlew, golden plover, great spotted woodpecker, grey heron, kestrel, lapwing, lesser black-backed gull, meadow pipit, redwing, sparrowhawk, common snipe, and woodcock. Some notable species are highlighted below.

Common Snipe (*Gallinago gallinago*) is a ground nesting species which typically utilizes open wet grassy areas such as wet grassland, marshes, and moorlands. While it is a relatively common bird species in Ireland, it is also elusive and rarely seen unless it is startled from its place in the vegetation. Common snipe feeds on invertebrates, such as insect larvae, as well as seeds and other plant material.

Common snipe
(*Gallinago gallinago*)



Golden Plover
(*Pluvialis apricaria*)



Kestrel (*Falco tinnunculus*) is a widespread resident species in Ireland, easily distinguished by their characteristic hovering behaviour as they search the ground for prey, such as small mammals and invertebrates. The kestrel uses a wide range of open habitat types including farmland and wetlands.

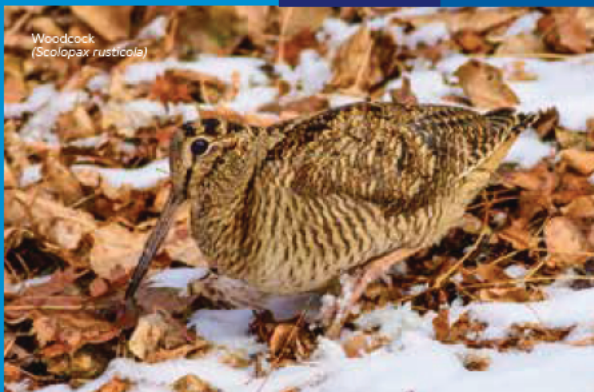
Golden Plover (*Pluvialis apricaria*) is a migratory bird which often overwinters in Ireland, while some may also be resident. Golden plover often occurs in large flocks using open agricultural grasslands or meadows as winter habitat. This species feeds primarily on invertebrates such as worms and beetles, and to a lesser extent seeds or other plant material.

Woodcock (*Scolopax rusticola*) is a resident and winter visitor in Ireland. This nocturnal species closely resembles the smaller common snipe in its overall appearance, also building its nest on the ground. Woodcock typically prefer nesting in woodland or scrub habitats, which provide cover, and feed on a range of invertebrates such as insects and worms.

Kestrel
(*Falco tinnunculus*)



Woodcock
(*Scolopax rusticola*)



05



Appendix F

[Back](#)

[Appendix F page 1](#)

[Appendix F page 2](#)

[Appendix F page 3](#)

[Appendix F page 4](#)

[Appendix F page 5](#)

[Appendix F **page 6**](#)

RECEIVED: 13/05/2024

contact us:

**[www.edf-re.ie/our-sites/
seskin](http://www.edf-re.ie/our-sites/seskin)**

We welcome your feedback on our proposals and encourage you to contact us with any questions, concerns or comments through our dedicated Community Liaison Officers for the project, Sharon O'Brien (086 389 0445) or Declan Collins (087 254 1416).

Alternatively, you can email the project team at **seskinwindfarm@edf-re-ie**



www.edf-re.com

EDF Renewables Ireland
Unit B, Ground Floor, Portview House, Thomcastle Street, Dublin 4, D04 V9Y9, Ireland

Appendix G

[Back](#)

RECEIVED: 13/05/2024



Seskin Wind Farm Public Exhibition



Up to 7 Turbines
with tip heights of
up to 180m



c.50 MW
A generating capacity of
c.50MW, powering more
than 36,000 homes*



Dear local resident,

As you may be aware, EDF Renewables Ireland intends to apply for planning permission for a wind farm to the northwest of the village of Old Leighlin, in the townlands of Seskinree and Ridge.

As part of our commitment to engaging with the local community, we are holding a public exhibition to share more detailed plans with you and other local residents.

We hope you are available to attend our exhibition and give us your views on our proposals.

Date and time of event

Date:	Tuesday 15 August 2023
Time:	3pm - 8pm
Venue:	Lord Baginail Inn, Main St, Ballyknockan, Leighlinbridge, Co. Carlow R93 E189

What happens next

At the exhibition we will explain the findings of the various studies carried out as part of the Environmental Impact Assessment and show the newly revised layout of the proposed wind farm with accompanying photomontages to help you assess visual impact. There will also be a virtual exhibition where you can view these materials online.

If you would prefer to speak to somebody personally, please get in touch.

We expect to submit a planning application for the wind farm to Carlow County Council in Q4 of this year.

Find out more about the proposed Seskin wind farm

The proposed project consists of up to seven turbines, up to 180m tall. This c.50MW wind farm would generate enough electricity to meet the annual domestic needs of c.36,000 homes each year.

Who we are

EDF Renewables Ireland is part of one of the world's largest electricity companies and our investment and innovation in renewable energy projects is reducing costs for consumers and bringing significant benefits to communities.

EDF Renewables Ireland's team has a wealth of experience in bringing complex development projects to fruition, across onshore and offshore wind, solar PV and battery storage technology, and is supported by over 400 colleagues in the UK.

Contact Us

Please visit our project website which we will keep updated as the project progresses:
www.edf-re.ie/our-sites/seskin

We welcome your feedback on our proposals and encourage you to contact us with any questions, concerns or comments through our dedicated Community Liaison Officers for the project, Sharon O'Brien (086 389 0445) or Declan Collins (087 254 1416).

Alternatively, you can email the project team at seskinwindfarm@edf-re.ie

* ICA Energy Ireland Report December 2021, Section 2.31, Table 20

Appendix H

Back

RECEIVED: 13/05/2024

4 NEWS

1 August 2023 | THE NATIONALIST

Showed no remorse for indecently assaulting two vulnerable girls

A BAGENALSTOWN man was last week jailed for seven-and-a-half years by Carlow Circuit Court after he was found guilty of 16 counts of indecently assaulting two vulnerable girls.

On sentencing William Middleton of 35 Fr Cummins Park, Bagenalstown on Thursday, Judge Eugene O'Keeffe said there were no mitigating factors in the case and that he had shown no remorse, nor had he ever apologised to his victims.

Middleton (66) had denied all charges, but in February, after a seven-day trial in Carlow Circuit Court, he was found guilty of 16 counts of indecently assaulting two girls on dates between May 1987 and June

1991. Judge O'Keeffe last week said that the two victims had to re-live the trauma that they had undergone when they were children by having to testify at the trial.

Middleton appeared via video link from prison at the sentence hearing after he had been remanded in custody in February after his trial. The two victims can't be named for legal reasons.

Investigating garda Annette Phelan told the court that one of the girls was aged between four and six years when the abuse happened and the other girl was aged eight to ten years. Prosecutor Nail Storan told the court that the first girl gave evidence of the defendant taking off her clothes and mastur-



A seven-day trial took place at Carlow Circuit Court

bating against her bare bottom. The court heard that Middleton would bring the girls, separately, into fields, where no-one could see them, where he masturbated against their buttocks. One of the women said that she remembered crying as she was being abused and that one time when they were in a field, he threatened to put her in a bag and throw it in the river if she told anyone what he was doing to her.

Before Middleton was sentenced on Thursday, two victim impact statements were introduced to court. The statement of one of the women was read out, in which she said

that she was a 'broken woman let down by ... the HSE and the gardai'. She said that she did not trust anyone except her own children and that she had spent her

what was going on and nothing was done about it.

The second victim read out her statement in court. She said that she had developed an

'The two victims had to re-live the trauma that they had undergone when they were children by having to testify at the trial' – Judge Eugene O'Keeffe

life feeling 'worthless and ashamed'. She said that she did not feel a sense of justice after her abuser was found guilty, because there had been people who knew back then

eating disorder when she was a teenager because she wanted to look boyish so that men wouldn't look at her. She continued that she started to self-harm, to the extent that she

had to be hospitalised after cutting herself so badly. The court heard that she had attempted suicide because of the abuse she had suffered and that if she recognised the smell of the soap that Middleton used while she was out and about in public that she would have to leave immediately and get away from the area. She also said that she found it hard to build up relationships, especially with men, because she could not put down the protective barrier that she'd built around herself. She said that the abuse she had suffered as a child affected every aspect of her life as an adult.

She also said that she felt that she was heard at the trial and that she felt like justice had been done. Kathleen Leader, 50, told Judge O'Keeffe that her client was very poorly educated and that he was addicted to alcohol. She said that he spent his time travelling on trains going from Bagenalstown to Carlow and that he had no significant work history. Ms Leader also said that he had the support of one of his sisters, who was in

court. Judge O'Keeffe, before sentencing Middleton, noted that the trial lasted seven days and that he had been found guilty on all counts before the court and that the two victims had to give evidence before a jury, thereby re-living the ordeal they suffered as children.

He said that the two victims were 'vulnerable children' and that Middleton was an adult who knew what he was doing. He added that there was 'a significant breach of trust' and that Middleton had not apologised to his victims, nor had he shown any remorse. Judge O'Keeffe said that the abuse took place 'regularly and frequently' and that it must have been terrifying for the two girls, especially when he threatened one of them with drowning her in the river.

Judge O'Keeffe found that there were no mitigating factors and set a headline sentence at eight years, which he reduced to seven-and-a-half years. He also backdated it to February, when the defendant was imprisoned.



Seskin Wind Farm – Public Exhibition

EDF Renewables Ireland will hold a public exhibition on its proposed Seskin Wind Farm from 3pm to 8pm on Tuesday 15 August, at The Lord Bagenal Inn, Leighlinbridge.

Members of the public are encouraged to attend to meet with the project team and learn more about the project.

For more information please contact our Community Liaison Officers Declan Collins (087 254 1416) or Sharon O'Brien (086 389 0445), or see

www.edf-re.ie/our-sites/seskin.

Ambitious plan for Tullow includes 11 projects

By Elizabeth Lee

AN AMBITIOUS plan that could see the centre of Tullow upgraded and enhanced over the next two decades was passed at the July meeting of the local municipal council.

The plan, which proposes to work on 11 projects in and around the town centre, was proposed

by cllr William Paton and seconded by cllr John McDonald, while a roll-call vote was passed unanimously. Chaired by cllr Charlie Murphy, a town committee of ten members was set up with representatives from the community, traders, Develop Tullow Association, the Tidy Towns and councillors.

The process of creating the plan was

research by Mervin company Urban Agency won the tender for researching and developing the plan, while the idea behind the project is to make Tullow 'an attractive, prosperous, vibrant and connected town centre, where people would want to be, to live, to work, to socialise and to visit', according to the report.

Once funding was granted for the research, a committee

while further meetings were held with council officials, planners and staff.

Four key themes emerged from the consultations and 11 projects were settled on within the plan. They focus on the Market Square, the courthouse, a heritage garden, biodiversity walks, a walkway along the River Slaney, plus other amenities there, pedestrian and cycle routes

various projects. Cllr McDonald seconded the plan, while cllr John Murphy said that 'it'll open new streams of funding for Tullow'.

Cllr Charlie Murphy said it was 'an important document, probably the most important document' that the municipal district has worked on yet, while cllr Brian O'Donoghue commended the team on the 'hard work' of the

Appendix I

[Back](#)

RECEIVED: 13/05/2024

THE NATIONALIST | 8 August 2023

NEWS 13

Glendale estate decision is branded 'a slap in the face'

By Elizabeth Leo

A DHOST estate outside Tullow was discussed at the last local municipal meeting after Carlow County Council refused planning permission that would allow the owners to finish the site.

Planners refused to give permission to the owners of the Glendale estate on the Shillelagh Road outside Tullow because there was "significant non-compliance" with modern planning guidelines, including room sizes, storage facilities and



Cllr William Paton

living areas. The estate was built more than a decade ago, but wasn't completed. Since then, planning regulations have been changed. If



Cllr Brian O'Donoghue

the owners had been successful in their planning application to finish off the estate, 70 houses would have been involved. At the Tullow MD

meeting in July, cllr William Paton said that he was "very disappointed" with the council's refusal, adding that while he was aware that the estate didn't comply with modern regulations, the council "could have been more flexible".

"There was an opportunity here," he said, adding that the owners could have brought in 300 tenants but didn't, and instead "got a slap in the face" from the council.

Cllr Paton said he hoped that the owners would bring the case

to An Bord Pleanála for consideration.

When cathaoirleach John Pender said that the owners had asked to demolish 14 of the units, cllr Brian O'Donoghue refuted this. He also said that "there was no way that the plans could have been passed" or for the property to qualify for a fire certificate.

Cllr O'Donoghue concluded by saying it was "an awful, awful site" and that the planners were "as far as they could be" when dealing with the application.



Seskin Wind Farm – Public Exhibition

EDF Renewables Ireland will hold a public exhibition on its proposed Seskin Wind Farm from 3pm to 8pm on Tuesday 15 August, at The Lord Baginbun Inn, Leighlinbridge.

Members of the public are encouraged to attend to meet with the project team and learn more about the project.

For more information please contact our Community Liaison Officers Declan Collins (087 254 1416) or Sharon O'Brien (086 389 0445), or see

www.edf-re.ie/our-sites/seskin.

Decision on parcel of land deferred

Appendix J

[Back](#)

RECEIVED: 13/05/2024

St Fintan's Church

	Readers	Ministers
Sun 20th August 9.30am	Josephine Fitzgerald	Mary Dunne
Church Cleaning	Bridie Keating, Mary Quinn, Josephine Fitzgerald	
Church Flowers August	Mary Daly	Papers Catherine Ayres

St Lazerian's Church

	Readers	Ministers
Sat 19th August 7.10pm	Jennifer Hickin	George Donoghue Paul Meunier
Sun 20th August 11.00am	Aodh Dobson	Peter Kelly Agnes Kavanagh
Church Cleaning	Margaret Foley, Kathleen Cummins, Kay O'Connor	
Church Flowers August	Aim Kelly	Reader for Week Peg Rice

NOTICES

EDF renewables: we are applying for planning permission for a wind farm to the northwest of the village of Old Leighlin, in the townlands of Seabree and Ridge. We will be having a Public Exhibition on Tuesday 15th August at 4pm - 8pm in the Lord Baginbun. We hope you are able to attend our exhibition and give us your views on our proposal. For more information or questions please contact Sharon O'Brien 086 8890445 or Declan Collins 087 2541416.

Gambling Support: now available here for individuals & family members. Please contact Aine at Baginbun Resource Centre on 083 0089055 email: aineb@rcgaa.ie

Heritage Week 2023 Lecture: Carlow County Museum and Carlow GAA present a Free Lecture by Dr Saoibhan Doyle, author, on 'A History of the GAA in 100 Objects and the Carlow Connections' on Thursday August 17th at 8.00pm in the Seven Oaks Hotel, Carlow Town. On display will be a selection of Carlow GAA memorabilia from our club. All Welcome.

Marriage Encounter Weekend: Catholic Marriage Encounter is a Weekend experience for any sacramentally married couple. Every relationship is a journey, and the grind of everyday life can cause you to lose touch with your spouse. This is a space for you and your spouse to pause, reflect, and reconnect privately. Our next Marriage Enrichment Weekend is Friday 3rd to Sunday 5th November 2023. At 'The Cork International Hotel' Cork. To book your place visit our website: www.marriageencounter.ie Tel: 087 2162436.

'Under Mary's Mantle': Under Mary's Mantle is a conference on faith and culture for young adults (18-35) with talks, prayer, Mass, Confession, workshops, food and social in the historic All Hallows campus, DCU, Dublin. A chance to build your faith in friendship with young men and women from across the country. Keynote speakers include poet and convert Sally Read, a one-time radical feminist who embraced the Faith. Bishop Alphonsus Cullinan, Cistercian Fr Aelred McGee, Marian theologian Professor William A Thomas and many more. The talks and workshops range widely: from poetry to reading the Bible, vocations and Mary in the Liturgical Year! Mass and Confessions take place both days. The conference takes place Saturday and Sunday, with a discounted ticket available for both days. If you're free for one, single day tickets are also available. Two day Saturday & Sunday = €60 Day rates = Saturday €40; Sunday €30. STUDENTS get a 10% discount - contact deusepatria@gmail.com for discount code. There is a limited amount of accommodation available in DCU, contact deusepatria@gmail.com or call 085 1442423 for rates and more information.


Graveyard Masses 2023

Old Leighlin	Friday August 18th	7.30pm
Clodagh	Monday September 4th	7.30pm

Irish Catholics: please be aware of the new price of €3. Thank you.

July Collection: it would be appreciated if all July donations can be returned as soon as possible. Thanking you in advance.

Thank You from Bishop Denis: I would like to express my heartfelt thanks to all those who attended and who organised the Mass in the Cathedral on Sunday evening Aug 6th to mark the 10th anniversary of my Episcopal Ordination. Thanks also for the good wishes expressed in so many ways. I deeply appreciate all your support during the last ten years, let us continue to 'serve the Lord with gladness'. +Denis



Parish Office will be open
Monday - Friday
9.30am - 1.30pm
From Mon 3rd July - Fri 1st September
Contact Number: 059 9722607

Appendix K

[Back](#)

RECEIVED: 13/05/2024



21 August 2023

Dear local resident,

As you may be aware, EDF Renewables held a public exhibition for the proposed Seskin Wind Farm at the Lord Bagenal Inn on Tuesday 15 August.

At this event, we presented detailed information to the local community about the project and its progress to date, and sought feedback from the local community in response to our plans.

In order to promote this event, we circulated local notices, included adverts in parish newsletter and the Carlow Nationalist, and discussed the event on KCLR 96FM, as well as mailing direct invites to those residents closest to the project. Unfortunately, we have since discovered that, due to an administrative error on our part, you did not receive this invitation.

All of the information presented remains on display as part of our virtual exhibition room, available to view at www.edf-re.ie/our-sites/seskin.

We are sorry for this error and, should you have any questions about the project, a member of our team would be happy to call out to your home at a time that is convenient to discuss the project further.

Please don't hesitate to contact us using the details below, and apologies again for any inconvenience this may have caused.

Your sincerely,

Declan Collins

Community Liaison Officer, EDF Renewables Ireland

E: seskinwindfarm@edf-re.ie

T: 087 254 1416

RECEIVED: 13/05/2024

more info:

www.edf-re.ie



www.edf-re.com

EDF Energy Renewables Limited. Registered No. 06456689.
Registered Office: Alexander House, 1 Mandarin Road, Rainton Bridge Business Park, Houghton le Spring, Sunderland DH4 5RA